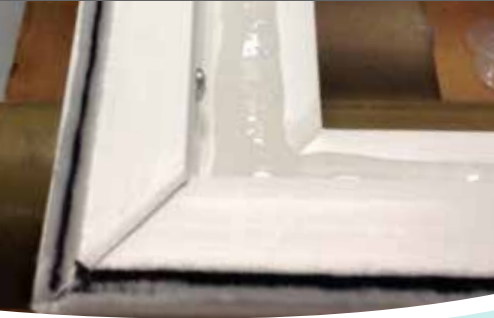




# Dow Corning® 2400 Silicone Assembly Sealant

*Achieve high performance and productivity at the same time*



Dow Corning® 2400 Silicone Assembly Sealant delivers a step change in mechanical strength and thermal-cycling performance for hot-melt sealants, enhancing design freedom for architectural window manufacturing.

New Dow Corning 2400 Silicone Assembly Sealant is ideal for use as a dynamic back-bedding sealant in the assembly of windows and doors. The sealant delivers the long-term durability inherent to silicone sealants at the critical interface between glass and frame. Its ease of use, primerless adhesion and green strength promote enhanced productivity with consistent quality to meet your manufacturing needs.

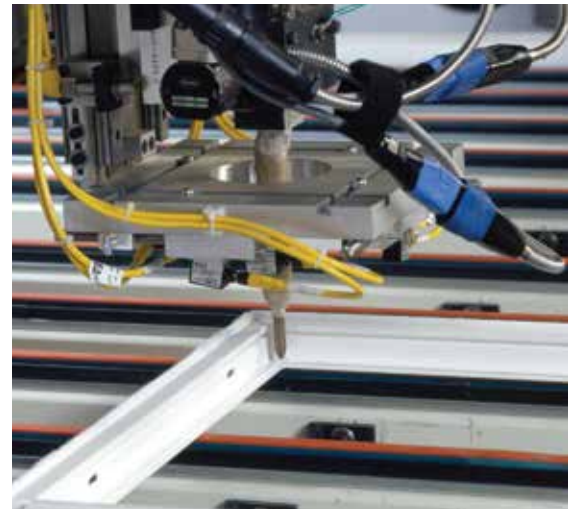
## Features/Benefits

- Suitable for impact and standard glazing
- Passes large-missile-impact testing and pressure cycles up to 100 psf
- Instant green strength delivers improved productivity, reducing storage space required to allow sealant to develop sufficient cure prior to shipment
- Primerless adhesion to common substrates – including wood, anodized aluminum and coated aluminum extrusions – eliminates manufacturing steps, reducing labor costs and increasing throughput; saves labor time compared with manual tape-glazing
- Minimal waste and cleanup
- Long-term weather-resistant durability
- Usable in standard XY-glazing equipment and hot-melt pumps
- Clear, neutral-cure RTV silicone
- Wide service-temperature range (-50 to 150°C)
- 15-minute open time
- Low VOC (<25 g/L)

## A sealant for tough standards

Dow Corning 2400 Silicone Assembly Sealant:

- Passes testing for air infiltration, water penetration by uniform or cyclic air pressure difference, and structural performance requirements
- Demonstrates successful use in High Velocity Hurricane Zone (HVHZ) designs, passing HVHZ Large Missile Impact Level D performance requirements
- Meets Low Velocity Hurricane Zone (LVHZ) performance standards
- Can be applied in window assemblies requiring forced-entry resistance

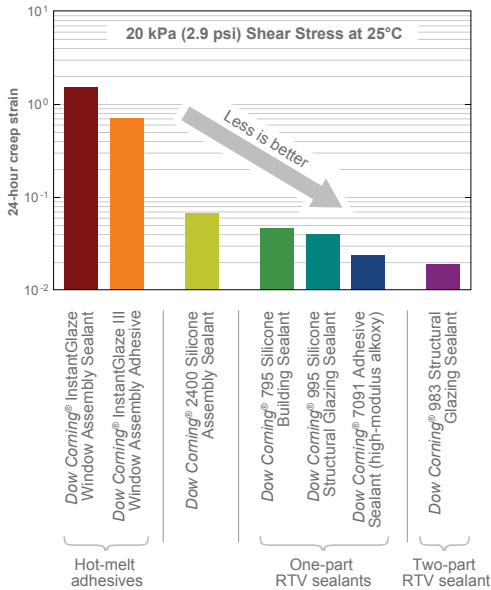


Dow Corning® 2400 Silicone Assembly Sealant is easy to apply using high-speed automatic equipment, including XY tables and robots.

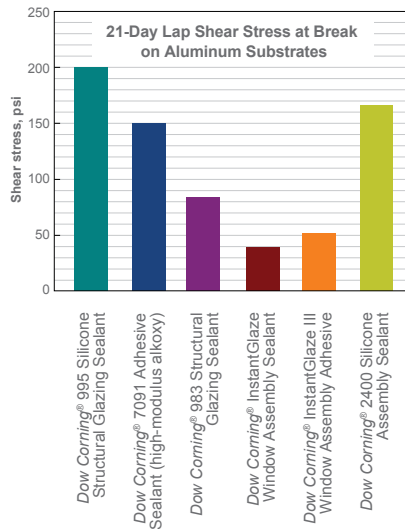
## Select the best performance for your back-bedding needs

Product	Green Strength	Productivity	Shear Resistance (Creep)	Adhesion to Common Fenestration Substrates	Squeeze-Out	Mechanical Strength and Thermal Cycling
Dow Corning® 2400 Silicone Assembly Sealant	Best	Best	Best	Best	Best	Best
One-Part Silicone Sealant	Good	Good	Best	Good	Good	Best
Two-Part Silicone Sealant	Better	Better	Best	Good	Good	Best
Dow Corning® InstantGlaze Window Assembly Sealant	Best	Best	Good	Best	Best	Good

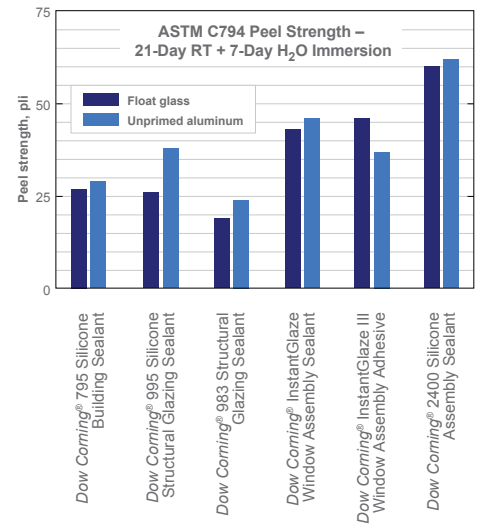
**Figure 1.**  
Creep resistance evaluation



**Figure 2.**  
Lap shear stress at break



**Figure 3.**  
Peel strength

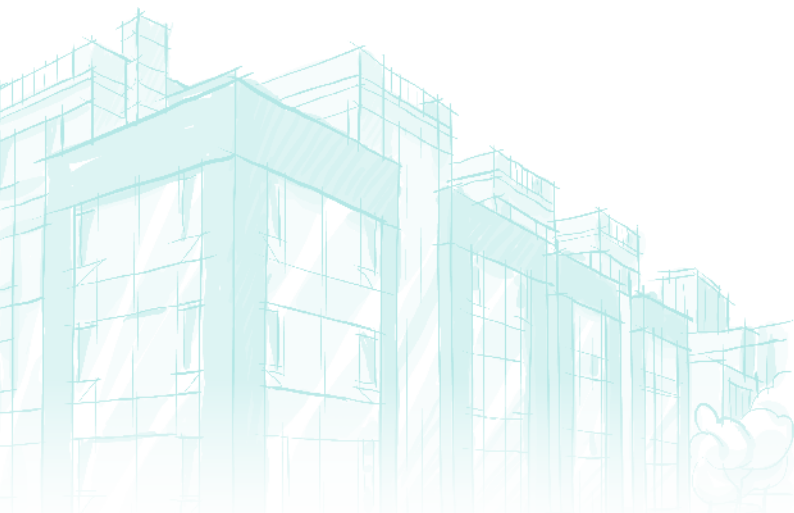


**Contact us**

Dow Corning is collaborating with industry professionals around the world to develop solutions to improve the energy efficiency of buildings for a more comfortable environment.

Learn more about Dow Corning’s silicone products for window and door applications and our full range of high-performance building solutions by visiting us online at [dowcorning.com/construction](http://dowcorning.com/construction).

Dow Corning has sales offices, manufacturing sites, and science and technology laboratories around the globe. Find local contact information at [dowcorning.com/ContactUs](http://dowcorning.com/ContactUs).



Images: Page 1 - AV24106, AV06100; Page 2 - AV25083

**HANDLING PRECAUTIONS**

PRODUCT SAFETY INFORMATION REQUIRED FOR SAFE USE IS NOT INCLUDED IN THIS DOCUMENT. BEFORE HANDLING, READ PRODUCT AND SAFETY DATA SHEETS AND CONTAINER LABELS FOR SAFE USE, PHYSICAL AND HEALTH HAZARD INFORMATION. THE SAFETY DATA SHEET IS AVAILABLE ON THE DOW CORNING WEBSITE AT [DOWCORNING.COM](http://DOWCORNING.COM), OR FROM YOUR DOW CORNING SALES APPLICATION ENGINEER, OR DISTRIBUTOR, OR BY CALLING DOW CORNING CUSTOMER SERVICE. LIMITED WARRANTY INFORMATION – PLEASE READ CAREFULLY

**LIMITED WARRANTY INFORMATION – PLEASE READ CAREFULLY**

The information contained herein is offered in good faith and is believed to be accurate. However, because conditions and methods of use of our products are beyond our control, this information should not be used in substitution for customer’s tests to ensure that our products are safe, effective, and fully satisfactory for the intended end use. Suggestions of use shall not be taken as inducements to infringe any patent.

Dow Corning’s sole warranty is that our products will meet the sales specifications in effect at the time of shipment.

Your exclusive remedy for breach of such warranty is limited to refund of purchase price or replacement of any product shown to be other than as warranted.

**TO THE FULLEST EXTENT PERMITTED BY APPLICABLE LAW, DOW CORNING SPECIFICALLY DISCLAIMS ANY OTHER EXPRESS OR IMPLIED WARRANTY OF FITNESS FOR A PARTICULAR PURPOSE OR MERCHANTABILITY.**

**DOW CORNING DISCLAIMS LIABILITY FOR ANY INCIDENTAL OR CONSEQUENTIAL DAMAGES.**

Dow is a registered trademark of The Dow Chemical Company. Dow Corning is a registered trademark of Dow Corning Corporation. The Corning portion of the Dow Corning trademark is a trademark of Corning Incorporated, used under license.

©2015, 2016 Dow Corning Corporation, a wholly owned subsidiary of The Dow Chemical Company. All rights reserved.

AGP14847

Form No. 63-6240A-01

